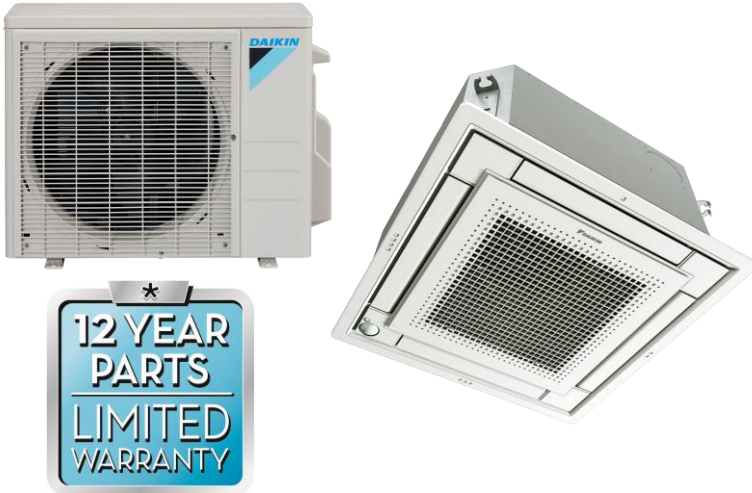


Job Name:	
Tag#	



Submittal Data Sheet	FFQ15Q2VJU / RX15RMVJUA
1.25-Ton Ceiling Mounted Heat Pump System	



Complete warranty details available from your local dealer or at www.daikincomfort.com. To receive the 12-Year Parts Limited Warranty, online registration must be completed within 60 days of installation. Online registration is not required in California or Quebec. *If product is installed in a commercial application, limited warranty period is 5 years.*

Efficiency			
Cooling		Heating	
SEER	20.70	HSPF	11.0
EER	12.5	COP	3.86

Performance	
Cooling (Btu/hr)	
Rated (Min/Max)	14,400 (5,100 / 16,200)
Sensible @ AHRI	9,820
Standard Operating Range	50°F – 115°F
Extended Operating Range*	-4°F – 115°F

Rated Cooling Conditions: Indoor: 80°F DB/67°F WB
Outdoor: 95°F DB/75°F WB

*With field settings and wind baffle

Heating (Btu/hr)	
1: @ 47° Rated (Min/Max)	16,200 (5,200 / 16,300)
2: @ 17° Rated	10,600
3: @ 5°	7,230
Operating Range	5°F – 65°F

1: Rated Heating Conditions: Indoor: 70°F DB/60°F WB
Outdoor: 47°F DB/43°F WB
2: Rated Heating Conditions: Indoor: 70°F DB/60°F WB
Outdoor: 17°F DB/15°F WB
3: Heating Conditions: Indoor: 70°F DB/60°F WB
Outdoor: 5°F DB/5°F WB

Electrical		
	208/60/1	230/60/1
System MCA	9.7	9.7
System MFA	15	15
Compressor RLA	8.0	8.0
Outdoor fan motor FLA	.31	.31
Outdoor fan motor W	91	91
Indoor fan motor FLA	.28	.28
Indoor fan motor W	50	50

MFA: Max. fuse amps MCA: Min. circuit amps (A) FLA: Full load amps (A)
RLA: Rated load amps (A) W: Fan motor rated output (W)

Piping	
Liquid (in)	1/4
Gas (in)	1/2
Drain (in)	1-1/32
Max. Interunit Piping Length (ft)	98.4
Max. Interunit Height Difference (ft)	65.625
Chargeless (ft)	32.8
Additional Charge of Refrigerant (oz/ft)	.21

Indoor Specifications				
Airflow Rate (cfm)	Cooling		Heating	
	H	M	H	M
	420	367	441	385
Sound (dBA) H / M / L	L		L	
	293		307	
Dimensions (H × W × D) (in)	10-1/4 × 22-5/8 × 22-5/8			
Weight (Lbs)	36			

Outdoor Specifications				
Compressor	Hermetically Sealed Swing Type			
Refrigerant	R-410A			
Factory Charge (Lbs)	2.49			
Refrigerant Oil	PVE (FVC50K)			
Airflow Rate (cfm)	Cooling		Heating	
	H	M	H	M
	2,313		2,108	
Sound Pressure Level (dBA)	50 / 51			
Dimensions (H × W × D) (in)	28-15/16 × 34-1/4 × 12-5/18			
Weight (Lbs)	97			

Daikin North America LLC 5151 San Felipe, Suite 500 Houston, TX 77056

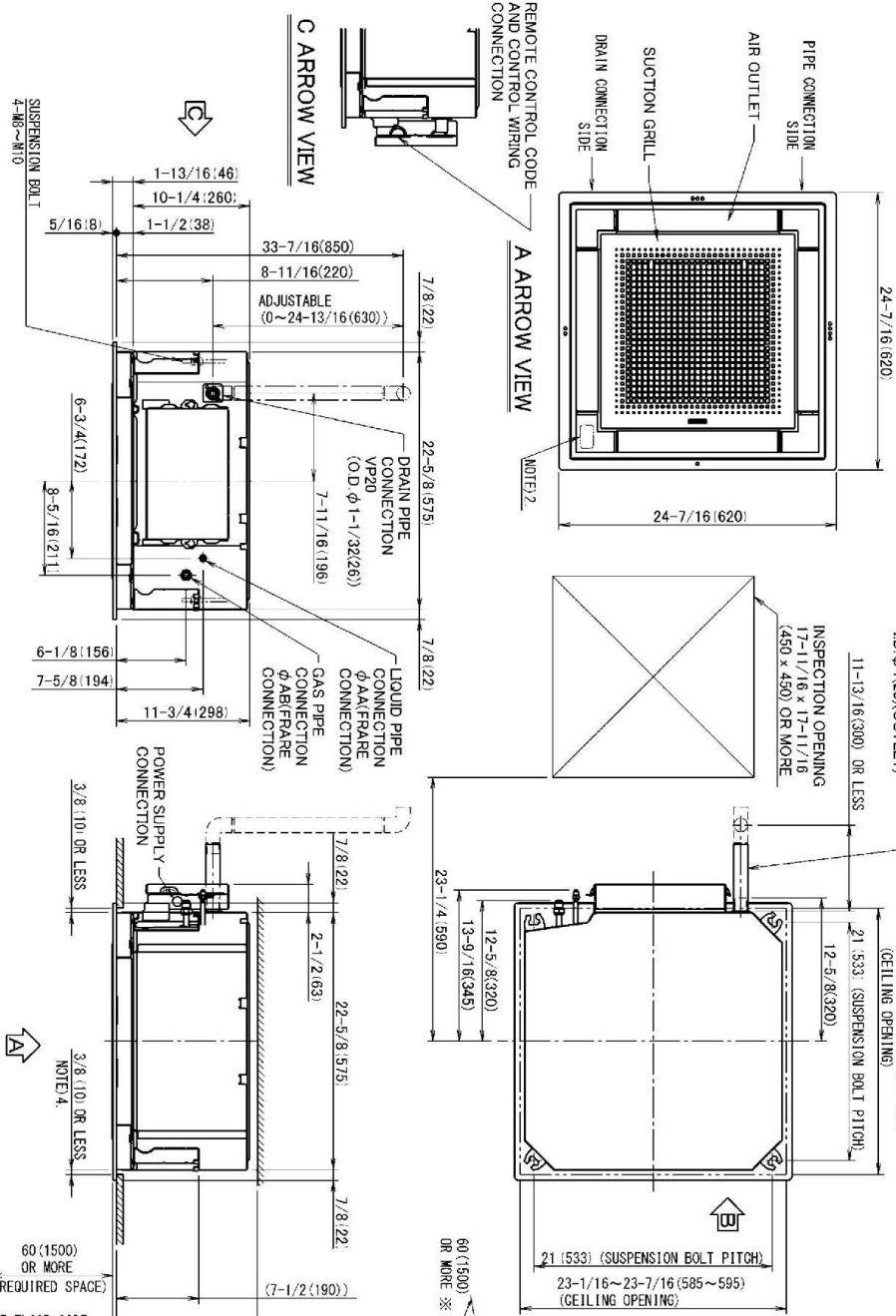
(Daikin's products are subject to continuous improvements. Daikin reserves the right to modify product design, specifications and information in this data sheet without notice and without incurring any obligations)

FFQ15Q2VJU Dimensional Data



• DECORATION PANEL
 BYF060G2M1W FRESH WHITE W9.5
 BYF060G2M1S DAIKIN SILVER

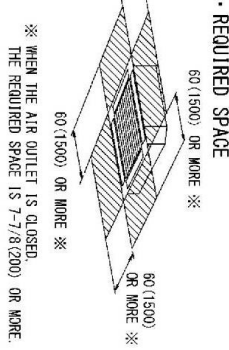
UNIT: inch(mm)



NOTE 1. STOCKING LOCATION FOR MANUFACTURE'S LABEL
 MANUFACTURE'S LABEL FOR INDOOR UNIT: ON THE BELL MOUTH INSIDE SUCTION GRILLE
 MANUFACTURE'S LABEL FOR DECORATION PANEL: ON THE INNER FRAME INSIDE SUCTION GRILLE
 2. IN CASE OF USING WIRELESS REMOTE CONTROLLER THIS POSITION WILL BE A SIGNAL RECEIVER.
 REFER TO THE DRAWING OF WIRELESS REMOTE CONTROLLER IN DETAIL.
 3. WHEN THE TEMPERATURE AND HUMIDITY IN THE CEILING EXCEED 88°F (30°C) AND RH 80% OR THE FRESH AIR IS INTRODUCED INTO THE CEILING OR THE UNIT CONTINUES 24 HOUR OPERATION, AN ADDITIONAL INSULATION OF 100MM (4 INCH) OR MORE IS ACCEPTABLE UP TO A MAXIMUM OF 23-1/16 (585) SQUARE CEILING OPENING.
 4. THOUGH THE CLEARANCE IS ACCEPTABLE UP TO A MAXIMUM OF 23-1/16 (585) SQUARE CEILING OPENING, KEEP THE CLEARANCE OF 3/8 (10) OR LESS BETWEEN THE MAIN UNIT AND THE CEILING OPENING SO THAT THE PANEL OVERLAP ALLOWANCE CAN BE ENSURED.

MODEL	MA	AB
FFQ09Q2VJU	1/4 (6.4)	3/8 (9.5)
FFQ12Q2VJU		
FFQ15Q2VJU		1/2 (12.7)
FFQ18Q2VJU		

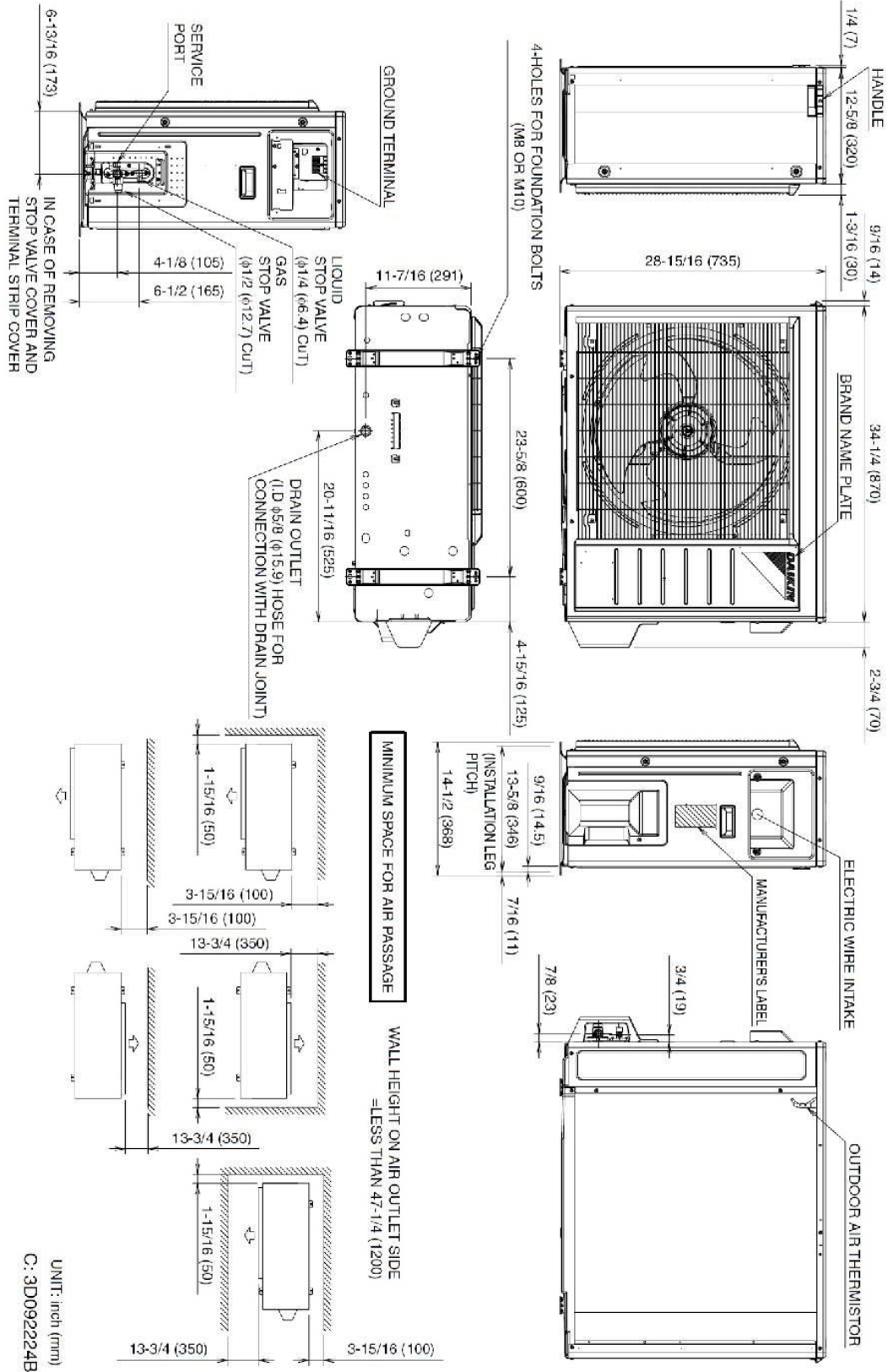
3D106039



Daikin North America LLC 5151 San Felipe, Suite 500 Houston, TX 77056

(Daikin's products are subject to continuous improvements. Daikin reserves the right to modify product design, specifications and information in this data sheet without notice and without incurring any obligations)

RX15RMVJUA Dimensional Data



Daikin North America LLC 5151 San Felipe, Suite 500 Houston, TX 77056

(Daikin's products are subject to continuous improvements. Daikin reserves the right to modify product design, specifications and information in this data sheet without notice and without incurring any obligations)

Optional Accessories



Indoor Unit – One Controller & Decoration Panel are Required

Included	Part Number	Description
	BRC1E73	Wired Navigation Remote Controller
	BRC082A42W	Wireless Remote Controller (White)
	BRC082A42S	Wireless Remote Controller (Silver)
	BYFQ60C2W1S	Low Profile Decoration Panel (Silver) - $1-13/16 \times 24-7/16 \times 24-7/16$
	BYFQ60C2W1W	Low Profile Decoration Panel (White) - $1-13/16 \times 24-7/16 \times 24-7/16$
	BRYQ60A2S	Sensor kit (Silver) Intelligent Eye, Comfort Airflow, and Floor Sensor
	BRYQ60A2W	Sensor kit (White) Intelligent Eye, Comfort Airflow, and Floor Sensor
	BDBHQ44C60	Sealing member of air discharge outlet
	KAF441C60	Replacement Long Life Filter
	DACA-CP2-1	Maxi Orange Condensate Pump
	DACA-CP3-1	Mini Condensate Pump 5 gph
	AZAI6WSCDKA	DKN Cloud Wi-Fi Adaptor

Outdoor Unit

Included	Part Number	Description
	DACA-WB-1	Powder-Coated Wall-Mounted Bracket
	KPW063B4	Low Ambient Wind Baffle /Air Adjustment Grille (15 & 18)
	KEH063A4E	Drain Pan Heater
	KKG063A42	Back protection wire net (15 & 18)
	KPS063A41	Snow hood (intake side plate) (15 & 18)
	KPS063A44	Snow hood (intake rear plate) (15 & 18)
	KPS063A47	Snow hood (outlet) (15 & 18)
	KKP937A4	Drain Plug for OD Unit

Standard Equipment



Part Number	Description
6017766	Drain Pump
2139531	Float Switch